



Preggy Care Android Application

Anumula Pavan Kumar, Visamshetti Asha Kiran,
Mummana Viswa Vinay and Shaikh Amin

EasyChair preprints are intended for rapid dissemination of research results and are integrated with the rest of EasyChair.

March 18, 2024

PREGGY CARE ANDROID APPLICATION

Pavan Kumar Anumula
Department of Computer Science
Engineering and Technology
Parul Institute of Engineering and
Technology
Vadodara, India
pavanapk3888@gmail.com

Asha Kiran Visamshetti
Department of Computer Science
Engineering and Technology
Parul Institute of Engineering and
Technology
Vadodara, India
ashakiranvisamshetti@gmail.com

Viswa Vinay Mummana
Department of Computer Science
Engineering and Technology Parul
Institute of Engineering and
Technology
Vadodara, India
viswa.ai.01@gmail.com

Asst. Prof. Amin Shaikh
Department of Computer Science
Engineering and Technology
Parul Institute of Engineering and
Technology
Vadodara, India
amin.shaikh19068@paruluniversity.ac.in

Abstract—This comprehensive eHealth application is a groundbreaking initiative centered on smartphone-based devices and communication systems. Its primary objective is to provide essential support to pregnant women, ensuring optimal prenatal care and ultimately leading to improved birth outcomes. The motivation behind this project stems from the recognition of the challenges faced by pregnant women during their 9-months journey. All too often, these challenges arise from issues such as informed decision-making, access to proper nutrition, a reliable transportation system, access to knowledgeable guidance, and a dependable nursing network. These fundamental needs should be consistently available to pregnant women throughout their pregnancy journey. Our application seeks to address these challenges systematically and comprehensively. The core focus of this application is to strengthen the communication channels between healthcare professionals and pregnant women while concurrently enhancing education, awareness, and the overall quality of care during pregnancy and childbirth. By providing a centralized platform, our application empowers pregnant women to access vital information and healthcare services seamlessly. With this eHealth application, we aspire to make pregnancy a safer, more informed, and ultimately more joyous experience for women around the world.

Keywords—eHealth application, pregnancy, prenatal care, maternal health, birth outcomes, communication, education, centralized platform, quality of care, reliable transportation system, healthcare services, groundbreaking, initiative

I. INTRODUCTION

According to World Health Organization ([WHO](http://www.who.org)), approximately 830 women die, every day from preventable causes related to pregnancy and childbirth. The ratio of maternal mortality is high in poor and rural areas. Almost 99% of maternal deaths take place in developing countries. As number of Internet users worldwide continues to grow. Mobiles are increasingly used by more women, where some of them are from the poorest and most remote areas of the world. Mobile and wireless technologies can provide exciting low-cost highly-reachable healthcare services such as managing chronic diseases, empowering elders and pregnant women, reminding people to take medicines at the proper time, facilitating health services to remote areas, generating customized health information and improving the outcomes of health and medical systems. For a deeper understanding of Maternal Health, please visit [WHO/Maternal Health](http://www.who.org/maternal-health). By providing vital information, timely reminders and expert guidance, we promote early intervention and safer deliveries. To prevent complications and reduce maternal mortality by empowering pregnant women through a centralized platform.

A. Problem Statement

Pregnant women today face a myriad of challenges, and the care they receive often falls short of the intention to provide comprehensive support. These challenges encompass a range of issues, like Pre-existing condition (28%), Severe bleeding (27%), Pre-eclampsia and Eclampsia (14%), Infections (11%), Obstetric labor complications, and others (9%), as well as Unsafe abortions (8%), for more details Harvard/Maternal Statistics. The root cause of these challenges lies in the lack of adequate guidance, maternal health treatment, personalized care, continuous monitoring, and proper observation. The main problem is being generated at key areas like medication, diet, living localities, transport services and awareness. During pregnancy, it is crucial for women to navigate each phase with care, as mistakes made during this time can pose significant risks during childbirth, affecting both the mother and the child.

B. Scope

With the help of available technology, our project aims to enhance interaction and communication links, leading to a significant increase in patient awareness during pregnancy. Pregnant individuals should have easy access to customized pregnancy info and important tips for each pregnancy stages, all at their fingertips. They should also be connected to healthcare providers whenever and wherever needed. Making the Interaction between both Doctors and Patient side makes them to feel free during the whole pregnancy period. This approach not only facilitates information sharing between pregnant women and maternity homes but also enhances decision-making and reduces delays in all aspects of healthcare. It has the potential to improve healthcare delivery, reduce costs, and enhance the overall patient experience. Additionally, it enables the exchange of medical information, medical imagery, and lab results, ultimately contributing to the development of health-care systems, even in remote areas. Ultimately, this project has the potential to improve efficiency and reduce deaths of new-born babies in a wide range where there is no facilities provided.

C. Aim

Project aims to design and develop the "Pregnancy Care Information" application, with the primary goal of improving maternal and infant health outcomes during pregnancy by facilitating informed decision-making.

D. Objective

Our project has the following specific objectives :

- [1] Strengthen communication links between healthcare providers and pregnant women.
- [2] Increase education and awareness among pregnant women.
- [3] Enhance the quality of nursing care during pregnancy.
- [4] Educate expectant mothers about pregnancy-related matters.
- [5] Monitor pregnancy progress.
- [6] Prevent pregnancy complications.
- [7] Improve maternal health.

E. System Specifications

Hardware Requirements : To develop and test the Android application, the following hardware is required:

A PC with Windows/Mac/Linux OS , Processor with minimum speed of 1.2GHz, Atleast 4GB RAM, 2GB Graphic card

Software Tools : The Pregnancy Care Application was developed using the following software tools:

IDE: Android Studio, Frontend Technology: Java, XML, UI/UX for designing Android application's user interface., Backend Technology: Room for local offline data storage (application database) and Firebase for server-side authentication.

II. LITERATURE SURVEY

Anatole Manzi, Laetitia Nyirazinyoye BMC Health Services Research entitled as "Improving Access to Quality Antenatal Care for High-Risk Pregnancies" represents as Underserved populations face challenges accessing quality antenatal care. Collaboration between healthcare providers and expectant mothers, along with accessible technology, can improve outcomes. This gives important info. into challenges faced in high-risk pregnancy care and potential solutions to address these challenges. Collaborative efforts between healthcare providers and expectant mothers, as well as the use of technology in healthcare delivery, can improve outcomes for patients globally. The article identifies various challenges faced in providing high-risk pregnancy care, including limited access to healthcare providers, lack of knowledge and awareness about high-risk pregnancy care, and issues related to migrant workers and their families who move frequently and lack access to healthcare services. It is essential to ensure that these technologies are accessible and user-friendly to all patients, including those from underserved populations. [1].

Smith, G.C.S.Pell, J.P. Walsh, Lancet delivers as "Pregnancy Complications and Management: Understanding Risks and Promoting Health" says Discusses complications such as miscarriage, stillbirth, and preterm birth. Highlights the impact of iron deficiency on pregnancy and the importance of managing various health conditions. There are various well-known situations may come at the time of pregnancy like nausea , hypertension, preeclampsia, gestational diabetes mellitus. Complications such as miscarriage, stillbirth, preterm birth, iron deficiency, and various well-known conditions can occur during pregnancy, and early detection and effective management can aid in minimizing their impact. [2]

Maqbool M, Dar MA, Gani I, WHO titled as "The Importance of Prenatal Care and Maternal Health in Global Health Initiatives" delivers that Emphasizes the importance of prenatal care in preventing complications. Discusses the impact of gestational diabetes and weight-related issues on maternal and

fetal health. Prenatal care and maternal health are crucial components of global health initiatives. Gestational diabetes is a common complication during pregnancy and can have severe impacts on body. It can lead to birth defects, miscarriages, obstructed delivery, low blood sugar levels in the baby, and risky deliveries. Access to quality health care can reduce maternal and foetal mortality rates. Monitoring and managing potential complications such as gestational diabetes and weight-related issues can prevent adverse outcomes. It is important to prioritize maternal health and good care. [3]

Ibtihal M Fadhil, Research Gate titled as "Challenges Faced by High-Risk Pregnancies" delivers that High-risk pregnancies pose challenges and require early identification. : To address the challenges, various measures taken. The first step is to identify the risk factors that may make a pregnancy high-risk, such as advanced maternal age, pre-existing medical conditions, or a history of complications in previous pregnancies Proposed solutions include risk factor identification, close monitoring, and timely interventions. High-risk pregnancies pose a significant challenge to healthcare providers and require specialized care to ensure the best possible output at the end . Early identification are crucial to reducing risk of complications and mortality [4]

Magdalena Smyka , Katarzyna Kosi, MDPI International titled as "Importance of Addressing Sleep Disturbances During Pregnancy and Postpartum" delivers that Discusses factors contributing to sleep disturbances during pregnancy and postpartum. Emphasizes importance of sleep to promote better health outcomes for both. Postpartum sleep disturbances can also be attributed to physical discomfort, hormonal changes, and the demands of caring for a new-born. New mothers may experience bad sleep. Miscarriage and stillbirth are unfortunate events that can occur during pregnancy, can also enhance likelihood of their occurrence. Timings difference in Sleep during are common and can have negative effects on new-born. [5]

Agustin CiapponiID, Ariel Bardach1, Daniel Comande , Plos One titled as "The Effects of COVID-19 on Pregnancy and Delivery" delivers that COVID-19 can lead to complications such as preterm birth, preeclampsia, and maternal mortality. Strategies for managing COVID-19 in pregnant women include vaccination etc. The COVID-19 pandemic has presented unique challenges for pregnant women and healthcare providers. Effective management strategies, such as appropriate screening, testing, and vaccination protocols, are needed to mitigate the impact of the pandemic on maternal and infant health. It is crucial that healthcare systems adapt and respond to the challenges posed by the pandemic to ensure that pregnant women and their new-borns receive the care they need. Effective management strategies are needed to minimize the impact of COVID-19 on maternal and infant health. These strategies can include implementing appropriate screening and testing protocols, providing access to prenatal care and mental health services, and ensuring appropriate infection control measures are in place. [6]

Cristina Matas-Blanco and Rafael A. Caparros-Gonzalez, Psych titled as "The Effects of Maternal Stress During Pregnancy" delivers that Maternal stress can lead to the release of stress hormones like cortisol. Stress triggers a complex physiological response that involves the release of stressfull hormones such as cortisol, which can have negative effects on maternal and fetal health.. Stress during pregnancy is associated with an increased risk of behavioral problems and cognitive delays in children. The negative impact of maternal stress during pregnancy highlights the need for prenatal stress management and interventions. Health care providers should identify and monitor pregnant women who are at risk for stress-related complications [7]

Stefanie N Hinkle, Cuilin Zhang, Katherine , Nutritional Epidemiology Public Health titled as "The Role of Nutrition in a Healthy Pregnancy" delivers that Adequate intake of key nutrients like folic acid, iron is essential for a healthy pregnancy. Poor nutrition during pregnancy can lead to complications like gestational diabetes, hypertension, and low birth weight. During pregnancy, the mother's body requires increased amounts of certain nutrients, such as folic acid, iron, and calcium. These can prevent anaemia in both the mother and the fetus. Optimizing maternal nutrition is essential for a healthy pregnancy outcome. Health care providers should encourage pregnant women to maintain a healthy and balanced diet to prevent complications and promote a healthy pregnancy. This can include increasing the consumption of nutrient-rich foods, such as fruits and vegetables, and reducing the intake of processed and fast foods. Prenatal supplements may also be recommended to ensure adequate nutrient intake [8]

Davenport MH, Ruchat SM, ACOG Committee titled as "The Effectiveness of Exercise During Pregnancy" delivers that Regular exercise during pregnancy can improve maternal and fetal health outcomes. While generally safe, exercise during pregnancy should be tailored to individual needs and health conditions. Exercise during pregnancy can be safe and beneficial for most women. Regular exercise during pregnancy can improve maternal health outcomes, including reducing , diabetes. It can also promote healthy weight gain and improve mental health outcomes, such as reducing anxiety and depression

Health care providers should encourage pregnant women to engage in regular physical activity while providing appropriate monitoring & guidance to ensure safe exercise practices. [9]

Barry M Lester, Lynne Andreozzi, Harm Reduction titled as "The Impact of Substance Use During Pregnancy on Infant Development" delivers that Substance use during pregnancy risks fetal development and infant outcomes Managing substance use during pregnancy like treatment access to improve outcomes Substance use during pregnancy is a serious issue that can have significant negative effects on fetal development and infant outcomes. Healthcare providers, policymakers, and society as a whole must work together to address this issue and provide appropriate screening, management, and support to pregnant women who use substances Effective management strategies are needed to address substance use during pregnancy and improve outcomes for both mother and baby. [10]

Moussa, Arian & Sibai Hind N Moussa, National Library of Medicine titled as "Managing Hypertensive Disorders of Pregnancy" delivers that Discusses the common complications of hypertensive disorders during pregnancy. Highlights the causes, types, risks, and strategies for prevention and management of these disorders. Hypertensive disorders of pregnancy require careful monitoring and management to prevent adverse outcomes for both mother and baby. Health care providers should be vigilant in identifying and managing hypertensive disorders of pregnancy, and public health initiatives should prioritize efforts to prevent these disorders through appropriate prenatal care, risk factor screening, and lifestyle interventions. Hypertensive disorders of pregnancy can be caused by a range of factors, including genetic predisposition, pre-existing medical conditions, and lifestyle factors such as obesity and smoking. [11]

Ambrogio P. Londero , Emma Rossetti, BMC titled as "The Effect of Maternal Age on Pregnancy Outcomes" delivers that Explores the impact of maternal age on pregnancy outcomes, both in advanced maternal age and adolescent pregnancies. Discusses the associated risks such

as chromosomal abnormalities and strategies for managing age-related risks. Maternal age is an important factor in pregnancy outcomes that should be recognized and managed appropriately to optimize outcomes for both mother and baby. Healthcare providers should be vigilant in identifying and managing age-related risks during pregnancy, and public health initiatives should prioritize efforts to improve education and support for healthy behaviors in women of all ages. Adolescent pregnancy, defined as pregnancy in women aged 19 years or younger, is also associated with several complications. Teenage mothers are more likely to experience preterm labor, low birth weight, and neonatal mortality [12]

Youxia Liu , Xinxin Ma , Jie Zheng, BMC titled as "Organ Failure in Pregnancy : Causes, Management & Outcomes" delivers that Examines the life-threatening issue of organ failure during pregnancy, its causes, and management approaches. Considers the outcomes of organ failure in pregnancy and the importance of a multidisciplinary care approach. Organ failure in pregnancy is a serious complication that requires prompt recognition and management to minimize the risk of adverse outcomes for the mother and the fetus. A multidisciplinary approach to care, including close monitoring, supportive care, and timely interventions, can improve outcomes for both the mother and the fetus. Management of organ failure in pregnancy involves a multidisciplinary approach, including close monitoring, supportive care, and timely interventions. [13]

Manoj Kumar, Marwa Saadaoui , Souhaila, Frontiers titled as "The Impact of Maternal Infections on Fetal Development" delivers that Focuses on the effects of maternal infections during pregnancy, covering bacterial, viral, and parasitic infections. Discusses the risks associated with maternal infections and emphasizes the need for appropriate screening and early management. Maternal infections during pregnancy can have significant consequences for fetal development and outcomes. Appropriate screening, diagnosis, and management of maternal infections are essential to minimize . Public health initiatives and education efforts aimed at preventing and managing maternal infections can help reduce the incidence and impact of these infections on maternal and fetal health. Maternal infections during pregnancy can lead to a range of adverse outcomes for both mother and baby. The severity and type of infection, as well as the timing of the infection during pregnancy, can impact the degree of harm caused. [14]

Marzieh Javanmardi, Mahnaz Noroozi, Firouzeh Mostafavi & Hasan, Reproductive Health titled as "Rare Challenges in Pregnancy : Understanding & Overcoming Uncommon Issues" delivers that Explores uncommon issues during pregnancy, including conditions like Intrahepatic Cholestasis of Pregnancy, placental abruption, and vasa previa. Emphasizes the importance of early diagnosis and appropriate management for these rare challenges in pregnancy. While rare, problems faced during pregnancy can have significant implications for both the mother and the unborn child. Early diagnosis, monitoring, and appropriate management are crucial to improve outcomes for both. Rare conditions to provide timely and effective care to women during pregnancy. Rare condition that affects the liver's ability to transport bile. The accumulation of bile acids can lead to intense itching and other complications, such as fetal distress, preterm labor, and stillbirth. [15]

III. PROJECT METHODOLOGY

The Pregnancy Care Application is designed to provide pregnant women with a comprehensive guide to manage their health during pregnancy. First step for pregnant women is by signing up using their health facility registration details. Once registered, a health card is issued to each pregnant woman and full body test is conducted by the hospital. If the test is completed and test report is confirmed, details are then uploaded. Hospital provides personalized diets and prescribed medications to each of them based on their test details observations. In case if full body test is not done, process is repeated until the test is completed. Hospital management checks and selects the issues for each pregnant woman based on the health card they have created . If there are any issues, they goes through an observation area where their condition is evaluated and personalized diets are recommended based on the universal diet and prescribed medicines based on those observations. This Application also provides a calendar to track the delivery date and 1-9 months information and Q&A to make informed decisions.

A. Patient Module

1. Sign Up and Login - Patients can initially sign up and log in to the application. After registration, they can access their home page.
2. Patient's Home Page - On the patient home page, they can view their Health card details, including their Photo, Name, Health ID, Date of Birth, Aadhar number and Phone number. They can also access various service sections(Tests PDF uploading, Medicines list, Notes)

Services : 9 Months Information(i.e Diet, Exercises, etc.), Notifications(Diet, Medicines), Q&A's for pregnancy issue, Personal details(Name, DoB, Age, Address, etc.)

B. Hospital Manager Module

1. Sign Up and Login - Admins sign up as service providers, verify their details, and access the Doctor's profile to manage patient-side content.
2. Doctor's Home Page - On the doctors home page, they can view their Profile,that includes their Hospital ID , Hospital name, Hospital Address, His Basic Details, etc. They can also access various service sections to manage patient-side.

Services : For Analysis & Better Understanding, Providing the list of Doctor's Availability, Admitted and Discharge, (Hospital: ID, Name, Address, etc.)

IV. IMPLEMENTATION AND DESIGN

A. Design Goals

To enable the secure outsourcing of files under the aforementioned model, our mechanism design should achieve the following security and performance guarantees:

B. Technologies Used

IDE : Android Studio, Frontend Technology : Java, XML, UI/UX(Figma , Adobe XD, AI tools) for designing Android application's user interface.

Backend Technology : Room for local offline data storage (application database) and Firebase for server-side authentication.

C. Process

With the help of available technology, our project aims to enhance interaction and communication links, leading to a significant increase in patient awareness during pregnancy. Pregnant individuals should have easy access to customized pregnancy info and important tips for each pregnancy stages, all at their fingertips. They should also be connected to healthcare providers whenever and wherever needed. Making the Interaction between both Doctors and Patient side makes them to feel free during the whole pregnancy period. This approach not only facilitates information sharing between pregnant women and maternity homes but also enhances decision-making and reduces delays in all aspects of healthcare. It has the potential to improve healthcare delivery, reduce costs, and enhance the overall patient experience. Additionally, it enables the exchange of medical information, medical imagery, and lab results, ultimately contributing to the development of health-care systems, even in remote areas.

This comprehensive eHealth application is a groundbreaking initiative centered on smartphone- based devices and communication systems. Its primary objective is to provide essential support to pregnant women, ensuring optimal prenatal care and ultimately leading to improved birth outcomes. The motivation behind this project stems from the recognition of the challenges faced by pregnant women during their 9-months journey. All too often, these challenges arise from issues such as informed decision.

These fundamental needs should be consistently available to pregnant women throughout their pregnancy journey

D. System Architecture

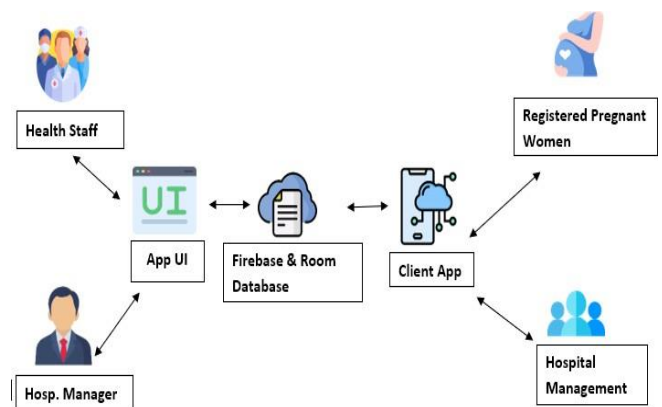


Figure 1: This is the Application Architecture

The Application Architecture of "Preggy Care" showcases a layered structure designed for scalability, reliability, and seamless functionality. At the core lies a robust backend server, facilitating data storage, retrieval, and processing. Connected to this server are multiple client interfaces, including the patient-side application and the manager-side application. The architecture employs secure communication protocols to ensure the confidentiality and integrity of patient data. Additionally, auxiliary components such as databases, APIs, and authentication services contribute to the overall efficiency and performance of the system

E. Usecase Diagram

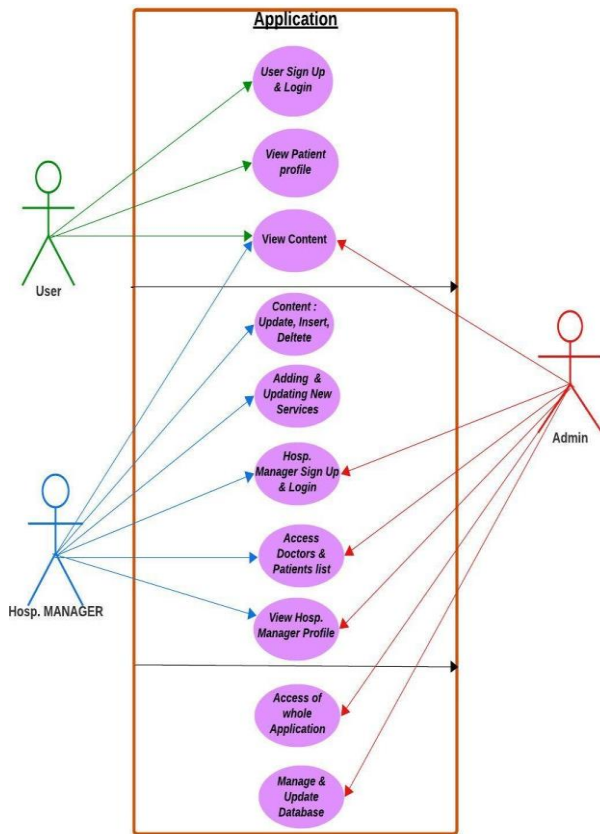


Figure 2: This is the Usecase Diagram of Application

The Usecase Diagram illustrates the various interactions and functionalities within the "Preggy Care" application. It delineates distinct roles such as patients, hospital managers, and doctors, each with specific actions and responsibilities. Patients can sign up, log in, access health card details, upload documents, and view informative content. Hospital managers oversee patient management, doctor scheduling, and administrative tasks. Doctors can access patient lists, manage appointments, and provide medical assistance. The diagram highlights the interconnectedness of these roles and the seamless flow of activities within the application.

Hospital managers play a pivotal role in overseeing the operational aspects of the application. They sign up as service providers, providing necessary details for account creation and verification. Upon logging in, hospital managers gain access to the application dashboard, where they can manage patient-side content and administrative tasks. This includes tasks such as managing patient lists for analysis and better understanding, providing doctors with lists of available appointments, tracking the count of admitted and discharged patients, and updating their own profiles to ensure accurate representation within the system.

Doctors within the "Preggy Care" application interface with patients directly to deliver personalized medical care and assistance. They can access their profiles on the application's home page, which includes details such as hospital ID, name, address, and other relevant information. From there, doctors can review patient lists, medical records, and schedule appointments accordingly. They also have the capability to prescribe medications,

F. Flow Charts

The flowchart for the "Preggy Care" project outlines the sequential steps involved in managing patient interactions and administrative tasks within the application. It begins with user registration, where patients sign up using their health facility registration details, and hospital managers register as service providers. Upon successful registration, patients gain access to their personalized home page, where they can view health card details, upload test reports, explore pregnancy information, and utilize features like the calendar and FAQs. Meanwhile, hospital managers access the application dashboard to manage patient lists, doctor schedules, and hospital profiles.

Doctors interact directly with patients, reviewing medical records, scheduling appointments, providing medical assistance, and communicating to ensure comprehensive prenatal care

Patient Side Flow Chart

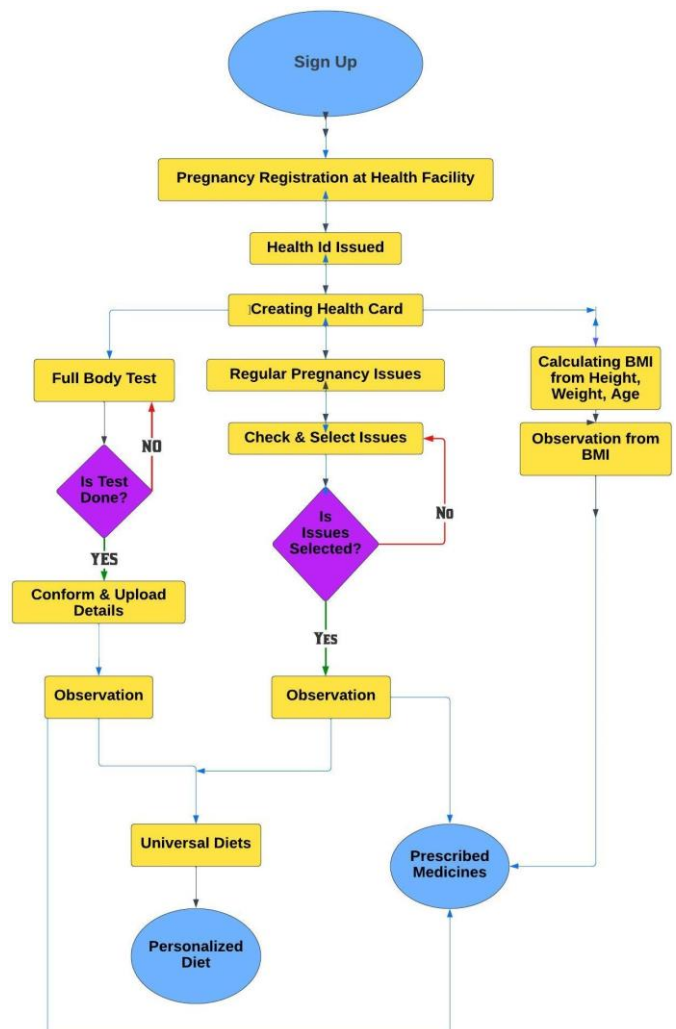


Figure 3: This is the Patient Side Flow Chart.

The Patient Side Flow Chart delineates the step-by-step journey of a user navigating through the patient interface of the "Preggy Care" application. It begins with the user signing up or logging in, followed by accessing the home page to view health card details. Subsequent actions include uploading test reports, viewing prescribed medications, exploring pregnancy-related information, accessing the calendar, FAQs, and updating personal profiles. The flow chart provides a clear visualization of the user experience.

Manager Side Flow Chart

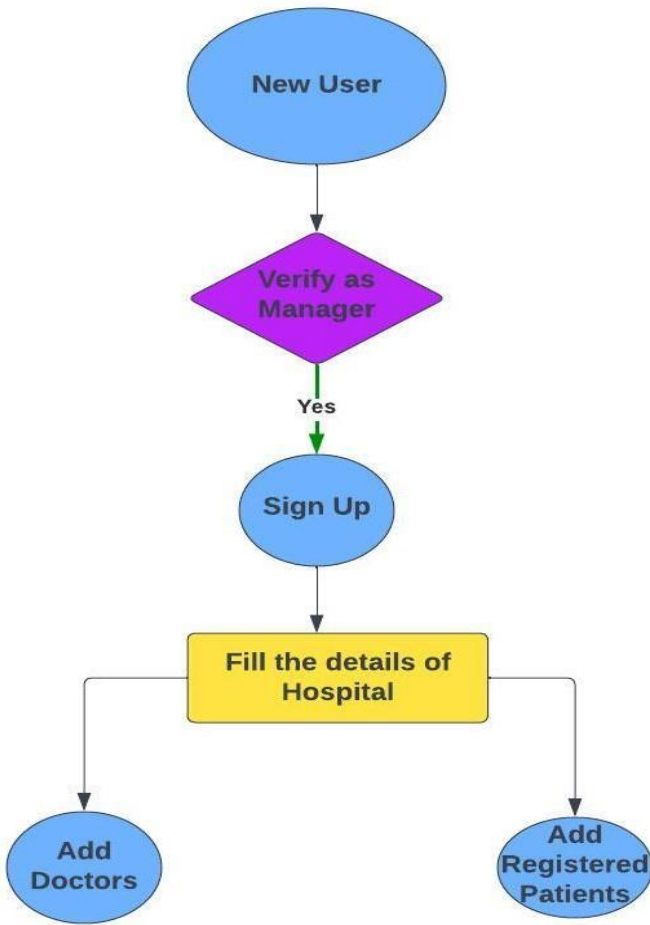


Figure 4: This is the Manager Side Flow Chart.

The Manager Side Flow Chart illustrates the operational workflow of hospital managers using the "Preggy Care" application. It encompasses activities such as signing up or logging in, accessing the dashboard to view patient lists, managing doctor availability, monitoring patient admissions and discharges, and updating hospital profiles. The flow chart elucidates the managerial tasks and responsibilities involved in overseeing patient care and optimizing healthcare services through the application.

V. OUTCOMES

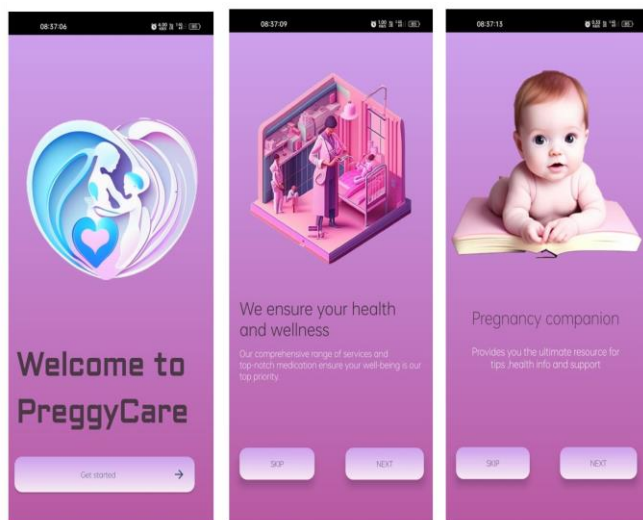


Figure 5: Landing & Overview Pages of "Preggy Care"

The Landing & Overview Pages of "Preggy Care" serve as the initial interface welcoming users to the application. The landing page features a visually appealing design with intuitive navigation elements, providing an overview of the application's features and benefits. Users can access informative content, sign up or log in, and explore various sections tailored to their roles (patient, hospital manager, doctor). The pages aim to create a positive first impression and guide users seamlessly into the application ecosystem.

The Overview Page offers a comprehensive glimpse into the functionality and scope of "Preggy Care." It provides an overview of the application's core features, including personalized health tracking, educational resources, communication tools, and appointment management. Users can gain insights into how the application can support them throughout their pregnancy journey, empowering them to make informed decisions and access essential healthcare services conveniently.

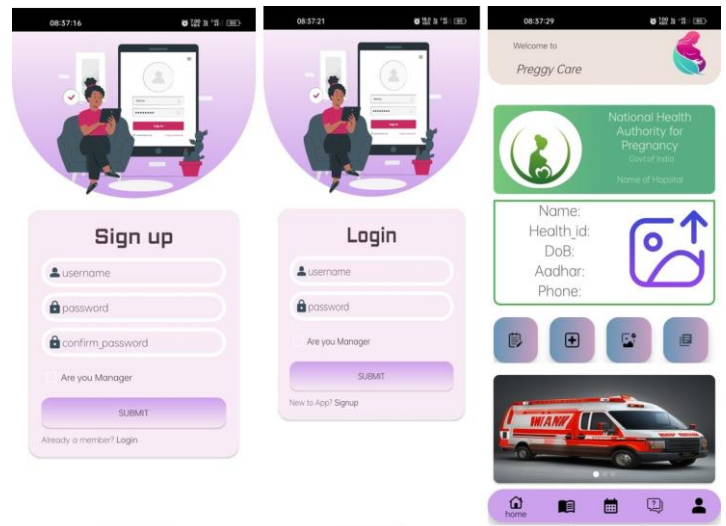


Figure 6: Manager Sign Up & Login Page

The Manager Sign Up & Login Page presents hospital managers with a streamlined interface for account creation and authentication within the "Preggy Care" application. The sign-up form collects necessary details for registration, including personal information and hospital credentials. Upon successful registration, managers can log in securely using their credentials to access the application dashboard. The page prioritizes simplicity and usability, ensuring a smooth onboarding experience for new users. Upon successful registration, users can seamlessly transition to the login page, where they enter their credentials to access the application dashboard. The login interface features a clean and intuitive layout, with prominently displayed fields for username and password. Users can also conveniently retrieve forgotten passwords or troubleshoot login issues through accessible support options.

The Manager Sign Up & Login Page prioritizes user convenience and security, establishing a solid foundation for a trusted and reliable digital platform. By minimizing friction and incorporating robust authentication mechanisms, the page ensures a seamless onboarding process for hospital managers while safeguarding sensitive data and maintaining compliance with privacy regulations.

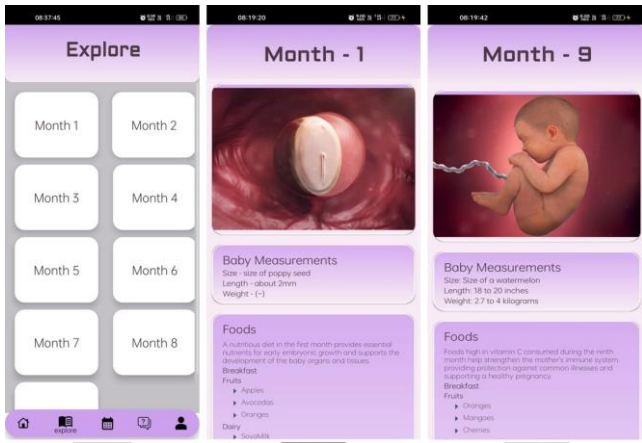


Figure 7: Month-1 to Month-9 Information

Month-1 to Month-9 Information pages within "Preggy Care" offer comprehensive guides tailored to each stage of pregnancy. These pages provide expectant mothers with valuable insights into diet, exercise, prenatal care, and common pregnancy-related issues. Users can navigate through monthly information using intuitive interfaces, accessing evidence-based recommendations and expert advice to support their journey towards a healthy pregnancy and childbirth.



Figure 8: Calender, FAQ's , Patient's Profile Page

The Calendar, FAQs, and Patient's Profile Page within "Preggy Care" offer essential functionalities for users to manage their pregnancy journey effectively. The calendar feature enables users to track important dates, appointments, and reminders related to prenatal care and childbirth. The FAQ section provides answers to common queries and concerns, empowering users with knowledge and guidance. Additionally, the Patient's Profile Page allows users to update personal information, view health card details, and manage preferences within the application.

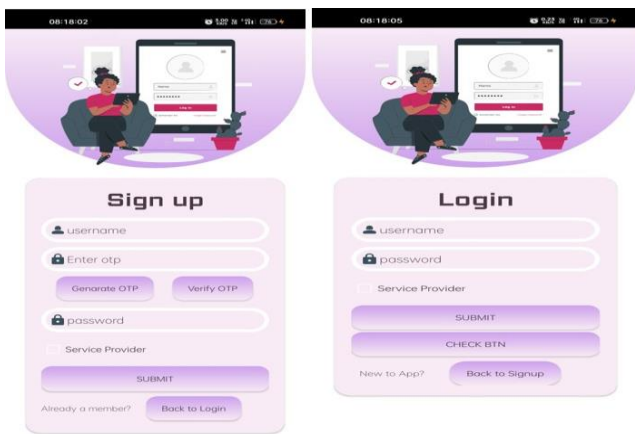


Figure 9: Manager Sign Up & Login Page

Similar to the Manager Sign Up & Login Page, this figure illustrates the streamlined process for hospital managers to create accounts and access the "Preggy Care" application. The interface emphasizes security and simplicity, guiding managers through the registration process and facilitating seamless login to the application dashboard. Clear instructions and intuitive design elements ensure a user-friendly experience for managers interacting with the platform.



Figure 10: Doctor's Home Page & Manager Profile Page

The Doctor's Home Page and Manager Profile Page provide distinct interfaces tailored to the needs of healthcare professionals within the "Preggy Care" application. The Doctor's Home Page offers doctors access to patient lists, appointment schedules, medical records, and communication tools to deliver personalized care efficiently. On the other hand, the Manager Profile Page enables hospital managers to manage institutional details, monitor performance metrics, and oversee administrative tasks seamlessly. Both pages prioritize usability and functionality, supporting healthcare professionals in delivering optimal care to pregnant women.

VI. CONCLUSION

In conclusion, the Pregnancy Care Application is meticulously crafted to empower pregnant women with comprehensive support and information throughout their pregnancy journey. It stands as a formidable solution to the manifold challenges faced by expectant mothers, with the overarching goal of making pregnancy safer and more informed for women.

Through the strategic utilization of technology, seamless communication channels and leveraging healthcare resources, this application possesses the transformative potential to significantly influence maternal and infant health outcomes. In doing so, it's not only strives to improve the healthcare systems but also seeks to elevate the overall experience of patients.

Simultaneously, The ultimate objective is to empower mothers through education, closely monitor the progress of pregnancy, proactively avert complications and ultimately enhance maternal health.

In essence, our dedication is singular—to enhance the well-being and prospects of expectant mothers. By providing them with a wealth of information, unwavering support and proactive healthcare measures, we aim to redefine the pregnancy journey, ensuring that every pregnant woman, irrespective of her background or location, can embark on this life-changing experience with confidence and security.

VII. FUTURE ENHANCEMENTS

Our commitment to improving prenatal care and childbirth experiences for pregnant women in both rural and urban areas is unwavering. To achieve this, We will conduct a survey for better understanding about Pregnanacy issues and lack of facilities they are experiencing. These insights will be integrated as services within our application. Our dedication to offering accurate up-to-date verified researched contents and bring them our analysis part where we take all the important decisions that would be help us to derive an application to do justice for all the issues elated by our project. We will develop our application with high standards and continous evolution of bugs and minimizing the irregularities which may lead to malfunctioning of application. Expanding our application to include telemedicine features, allowing pregnant women to have virtual consultations with healthcare providers, bridging the gap between them and quality medical assistance. We will create a community forum within the application where pregnant women can connect with each other, share their experiences, and seek support. We are also dedicated to the ongoing expansion of our educational content. Through articles, videos, we aim to provide comprehensive resources on pregnancy & childbirth, Additionally , We are unwavering in our commitment to strengthening data security measures to safeguard the sensitive health information of pregnant women, ensuring their trust in our application.

Some aspects of our application : Quick adaptation to users' needs, Great User Interface, Fast loading time and high performance, Quality Content

VIII. REFERENCES

- [1] Manzi et al. BMC Health Services Research 18:136 (2020).Authors:Anatole Manzi1,2,3 Laetitia Nyirazinyoye, Joseph Ntaganira3, Hema Magge4,5,6, Evariste Bigirimana7. Improving access to quality antenatal care for high-risk pregnancies, 9(1), 6-10.
- [2] Smith, G.C.S.Pell, J.P. Walsh, D. (2021). Pregnancy complications and maternal risk of ischaemic heart disease:A retrospective cohort study of 129,290 births. Lancet 2001, 357.
- [3] Maqbool M, Dar MA, Gani I, Mir SA, KhanM ,Bhat AU(2020). Maternal Health:An Important IssueVolume 8, Issue 3, 450-459.doi: 10.20959/ wjpps20193-13290.
- [4] PregnancyRetrospective_study.researchgate.net/publication/305237293.=doi.org/10.5915. Research gatE site info(2020).
- [5] MDPI-International, Sleep Problems in Pregnancy- Magdalena Smyka 1, Katarzyna Kosi, Nicole Sochacki-Wo'jcicka 1,Magdalena Zgliczy Onska 2 and Miroslaw Wielgo's 1, 23 July 2020
- [6] Plos One. Agustn CiapponiID1, Ariel Bardach1, Daniel Comande ID1, Mabel Berrueta1, Fernando J.Argento1, Federico Rodriguez Cairoli1(2021).COVID-19 and pregnancy.
- [7] Psych. Cristina Matas-Blanco and Rafael A. Caparros-Gonzalez(2021). National Institute of Child Health and Human Development. (2021). Influence of Maternal Stress.
- [8] Stefanie N Hinkle,1 Cuilin Zhang,1 Katherine L Grantz,1 Anthony Sciscione,2 Deborah A Wing,3. Nutritional Epidemiology and Public Health(2021). ChooseMyPlate.gov. Nutrition during Pregnancy
- [9] ACOG Committee opinion. Davenport MH, Ruchat SM, et al. 2019 Physical Activity and Exercise Br J Sports Med. 2018;52(21):1339-1346. doi:10.1136/bjsports-2018-100056..
- [10] Harm Reduction Journal. Barry M Lester, Lynne Andreozzi and Lindsey Appiah.. Substance use during. Genome Res. 2020;30(1):44-57. doi:10.1101/gr.255232.119.
- [11] Moussa, Arian & Sibai Hind N Moussa,1, Sara E Arian1 & Baha M Sibai1. 202: Management of hypertensive disorders in pregnancy..
- [12] Londero et al. BMC Pregnancy and Childbirth. Ambrogio P. Londero1 , Emma Rossetti1 , Carla Pittini2 , Angelo Cagnacci1 and Lorenza Driull.Maternal age and the risk of adverse pregnancy outcomes.

- [13] Youxia Liu1 , Xinxin Ma2 , Jie Zheng3 , Xiangchun Liu4 and Tiekun Yan1. Liu et al. BMC Pregnancy and Childbirth. Pregnancy outcomes in patients with acute kidney injury kidney injury during pregnancy: a systematic review and meta-analysis.
- [14] Frontiers in Cellular and Infection Microbiology. Manoj Kumar, Marwa Saadaoui and Souhaila Al. Infections and Pregaracy.2020;28:81-88.
- [15] Journal. Reproductive Health.Challenges to access health information during pregnancy in IranJavanmardi. Reproductive Health (2020).16:128.https://doi/10.1186/s12987678-019-